



KYOCERA Cloud Connect Manual

(How to import the server certificate of Evernote)

KYOCERA Document Solutions Inc.

Special Note

Audience

This book targets the person who installs "KYOCERA Cloud Connect" (abbreviated to "Cloud Connect") in MFP.

Target Models

All models which are supported by Cloud Connect

Special Instruction

- Cloud Connect was able to access Evernote service by the root certificate which preliminarily-registered in MFP, until November 5th 2015. However, on November 6th 2014, Cloud Connect can not access Evernote service because the server certificate of Evernote was changed.
- A communication error occurs if the Certificate for Evernote service is not registered. Please refer to this document for the registration of certificate.

Contents

This document explains the procedure of importing the server certificate of Evernote to use Evernote service via Cloud Connect.

Trademark

HyPAS™ is a trademark of KYOCERA Document Solutions Inc.

All other brands, product names, service names and logo marks are registered trademarks or trademarks of their respective companies. The designations ™ and ® will not be used in this Operation Guide.

EVERNOTE and the Evernote Elephant logos are trademarks of Evernote Corporation and used under a license.

Contents

1	Registration of Certificate to use the Evernote service	1
1.1	Confirmation of Certificates	1
1.2	Copy of Certificate	2
1.3	Registration of Certificate	7

1 Registration of Certificate to use the Evernote service

Cloud Connect is accessed to the Evernote service by using the SSL communication. For that, it is necessary to register the Certificate that the Evernote Co. offers to MFP in which Cloud Connect is installed.

Cloud Connect doesn't operate normally if the Certificate is not registered.

The confirmation method and the registration method of the Certificate for Evernote to MFP are shown below.

1.1 Confirmation of Certificates

After Cloud Connect is installed onto MFP, input address "https://[IP address of MFP]:8083/" in PC Browser. "HyPAS Device Online*" is displayed (Figure 1).

For the how to install an application onto MFP, please refer to User Manual.

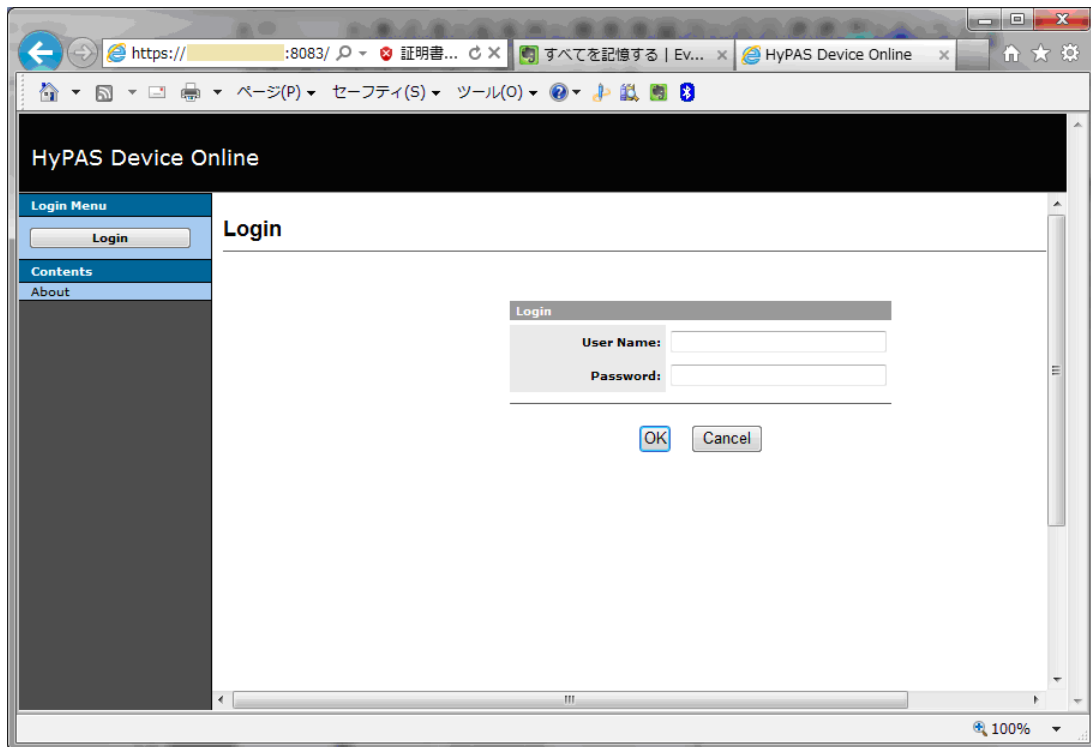


Figure 1

* The following are the supported browsers of HyPAS Device Online.

Browsers	Supported Versions
Internet Explorer	8 or later
FireFox	3.6 or later
Safari	4 or later

After log in "HyPAS Device Online", select "Certificate" from a left navigation. Then, "Certificate Manager (Server Certificate)" is displayed (Figure 2).

You can confirm the registered Certificates.

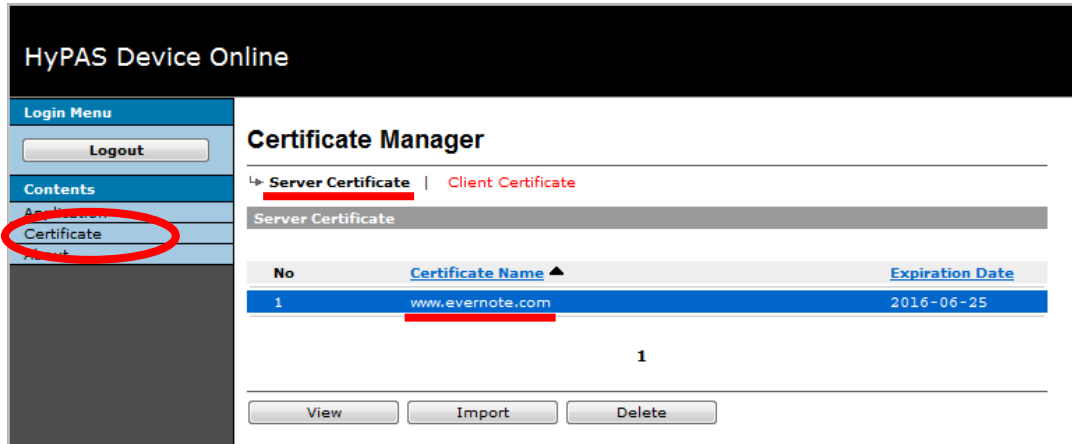


Figure 2

When target certificate is not registered, please register the certificate according to the following procedure.

1.2 Copy of Certificate

Access Evernote Login page (<https://www.evernote.com/Login.action>) from a browser of PC. And display the Certificate. Please refer to Figure 3 for the display method of the Certificate.

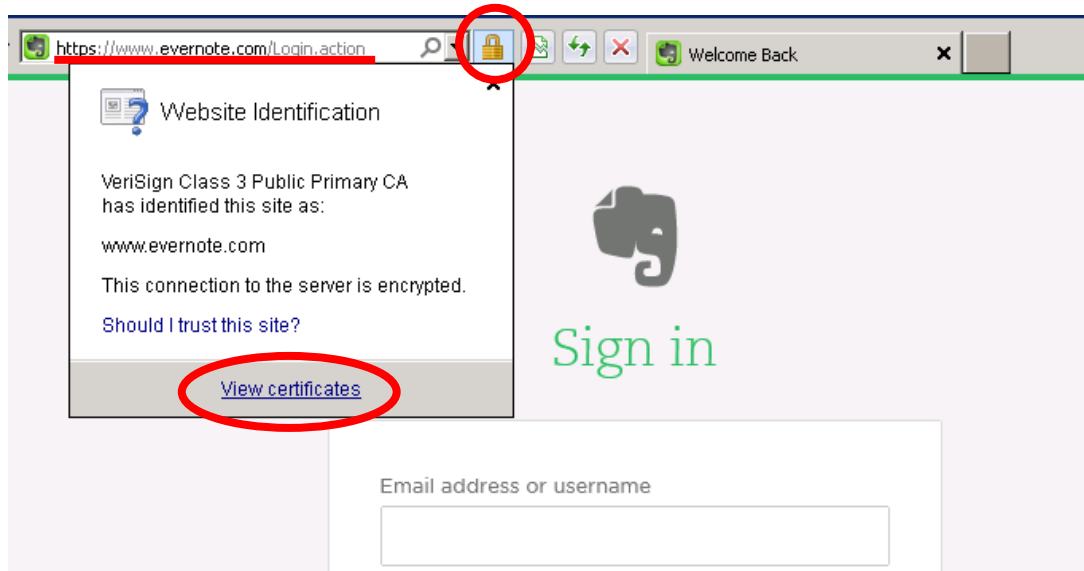


Figure 3

Select "Details" tab of the Certificate (Figure 4).

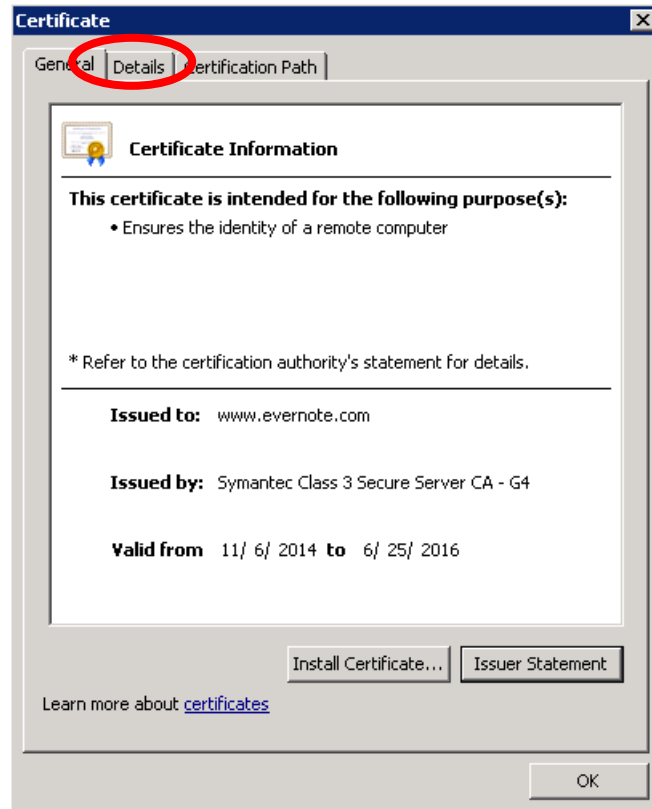


Figure 4

Click "Copy of file" button (Figure 5), and display "Certificate Export" wizard (Figure 6).

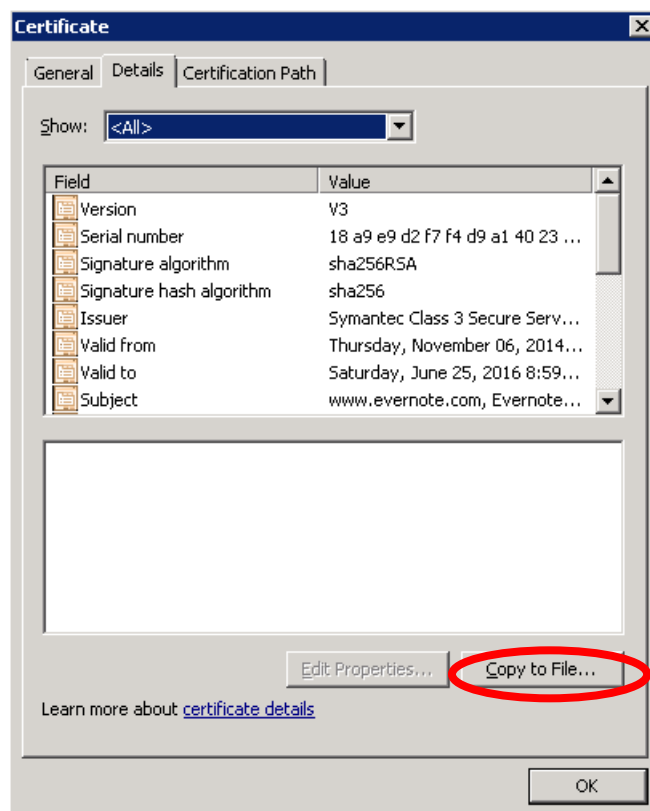


Figure 5

Start "Certificate Export" wizard (Figure 6).

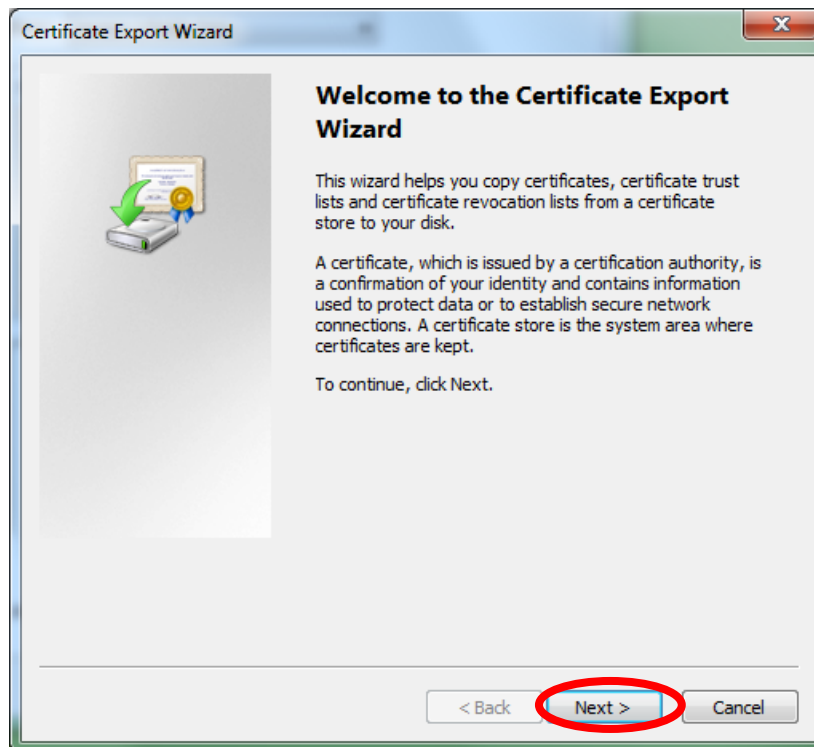


Figure 6

Select the file format, and click "Next" button (Figure 7).

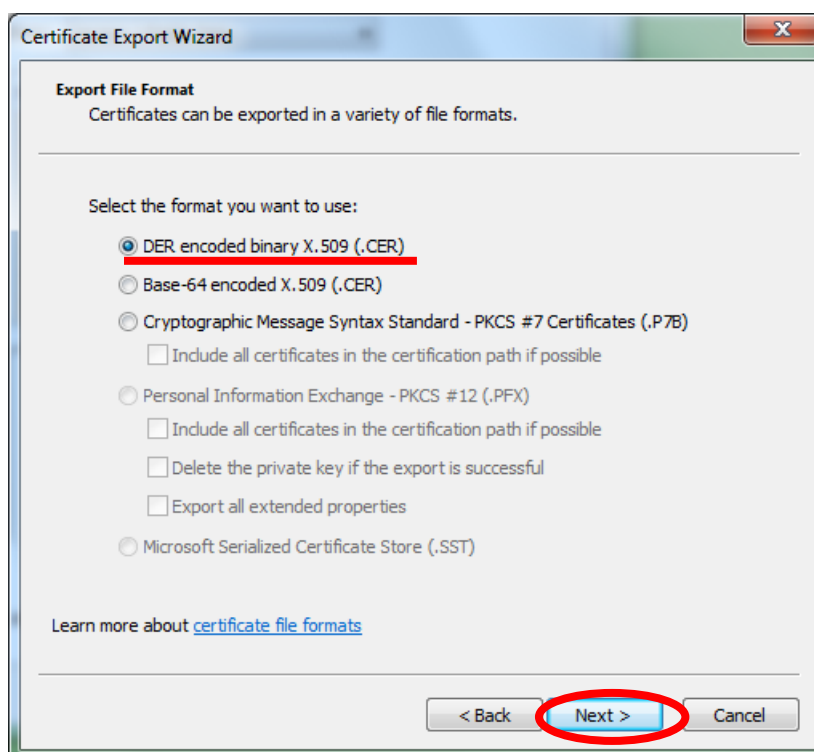


Figure 7

Specify file name, and click "Next" button (Figure 8). Please set ".cer" as file extension.

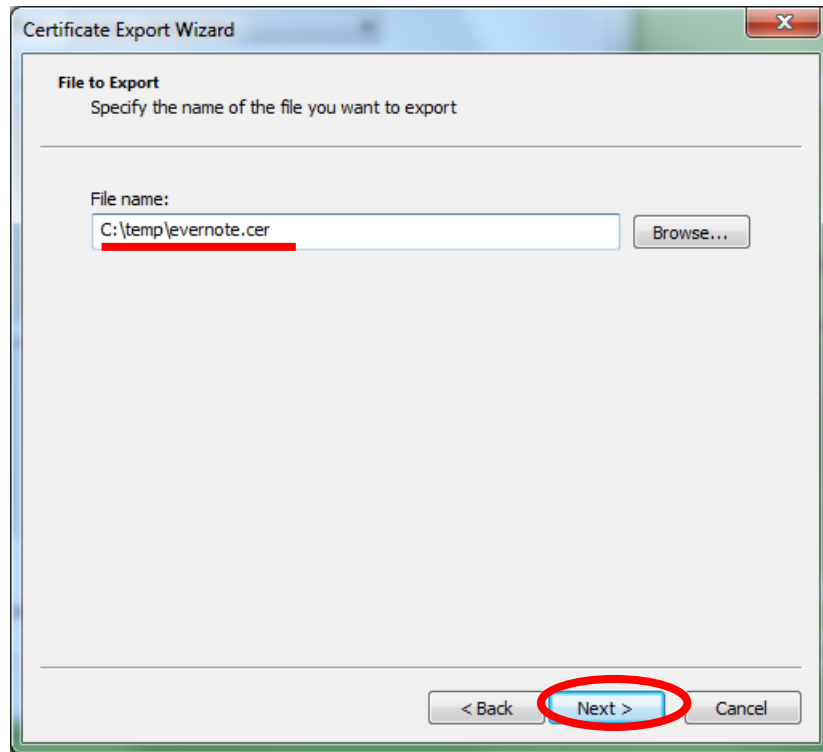


Figure 8

Finish "Certificate Export" wizard (Figure 9).

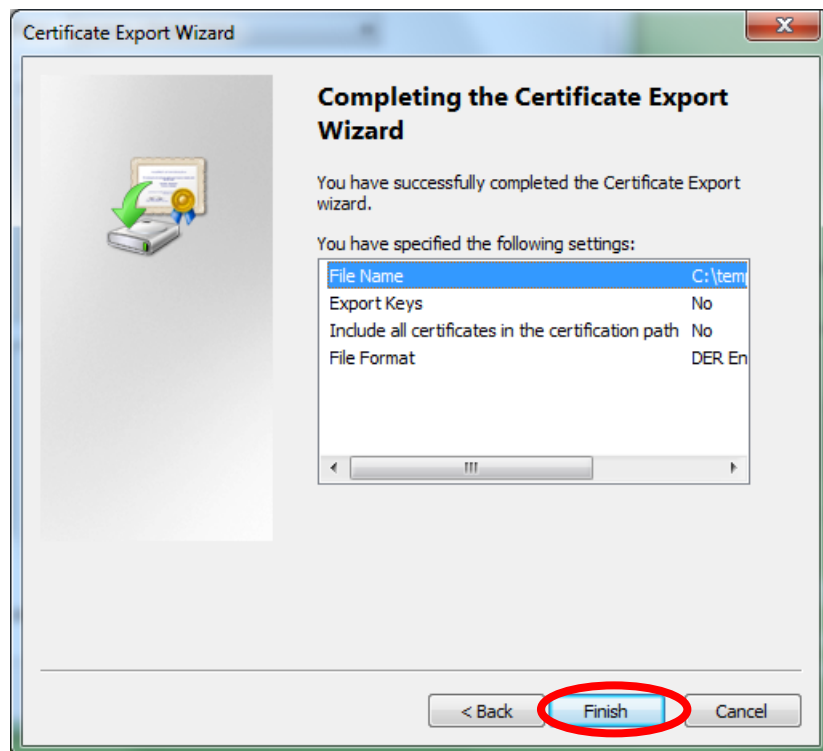


Figure 9

After "Certificate export" wizard is completed, the message is displayed (Figure 10). Please click "OK" button.

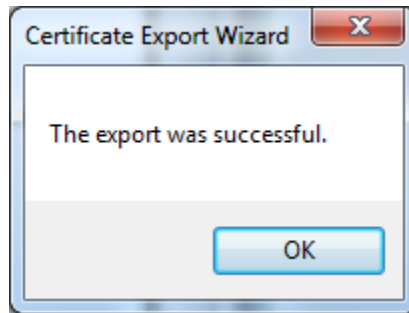


Figure 10

Figure 11 is a copied Certificate.

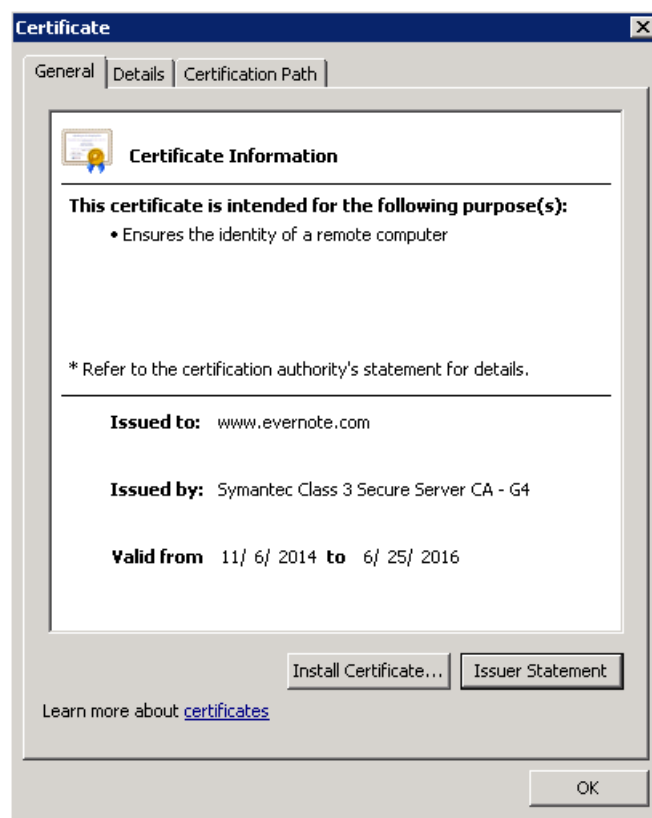


Figure 11

1.3 Registration of Certificate

After Cloud Connect is installed onto MFP, input address "https://[IP address of MFP]:8083/" in PC Browser. "HyPAS Device Online" is displayed (Figure 12).

For the how to install an application onto MFP, please refer to User Manual.

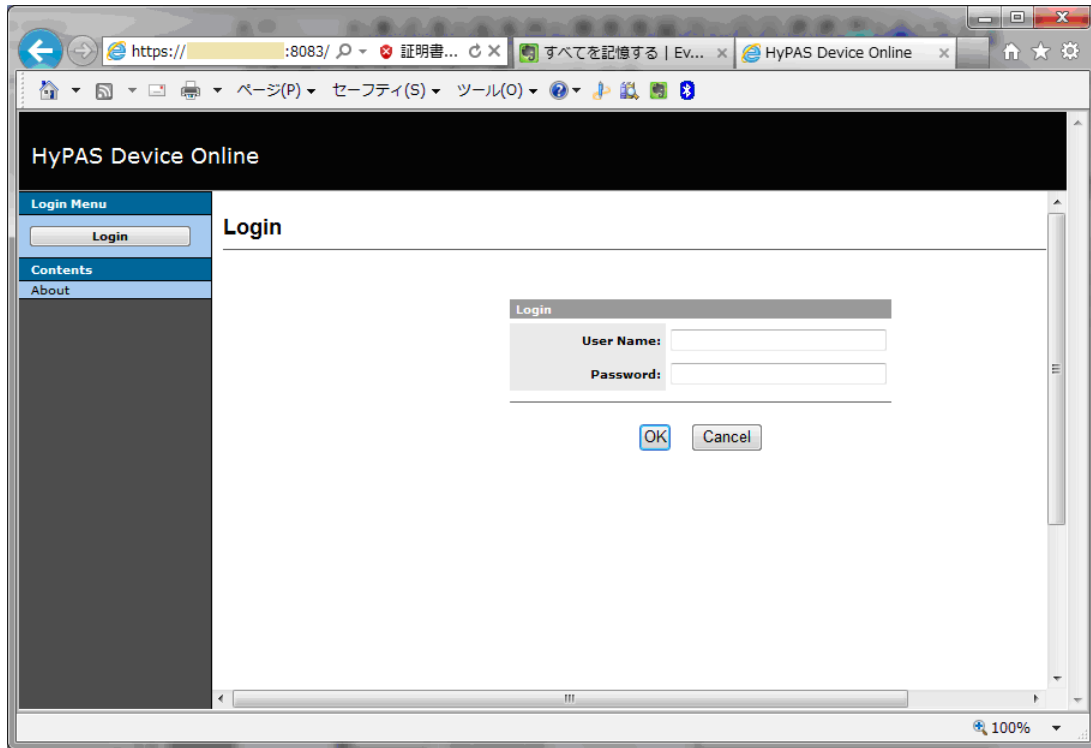


Figure 12

After log in "HyPAS Device Online", select "Certificate" from a left navigation. Then, "Certificate Manager" is displayed (Figure 13).

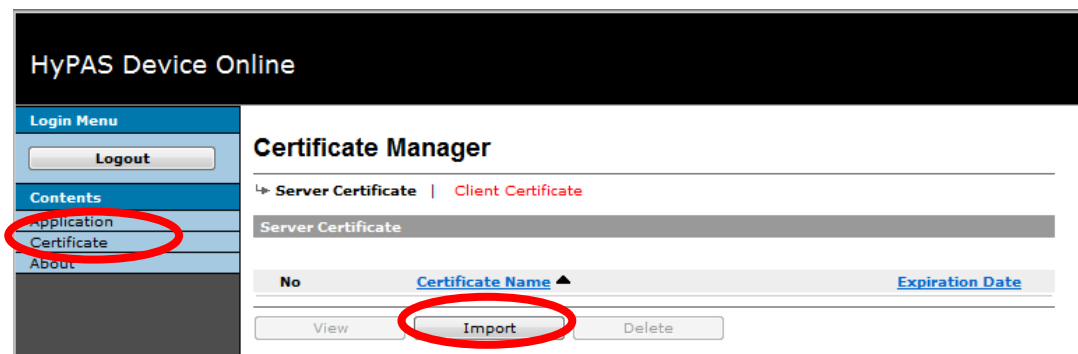


Figure 13

Click "Import" button, and register Certificate copied in section 2.2 (Figure 14).

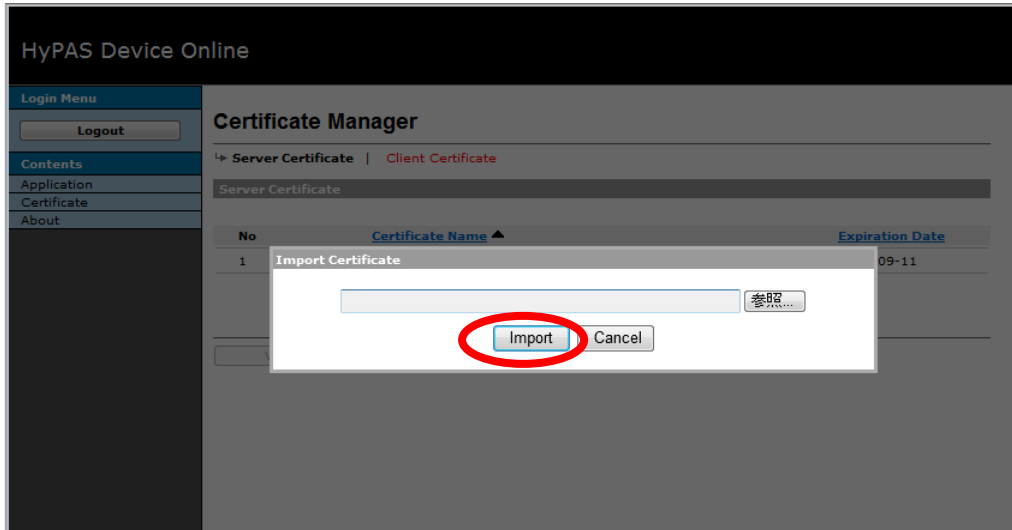


Figure 14

After log out of HyPAS Device Online, please power off and power on MFP after registering the Certificate.

